

N°36 - SONATE POUR PIANO N° 11 (extrait) W.A. MOZART

1.

7

2.

N° 37 - MICHAEL, ROW THE BOAT ASHORE (Negro-spiritual)

6

N° 38 - ALLEMANDE

5

1.

2.

N° 39 - O SUZANNA (U.S.A.)

6

11

16

N° 45 - JINGLE BELLS - JOYEUX CARILLON (paroles françaises : Louis Loiré)



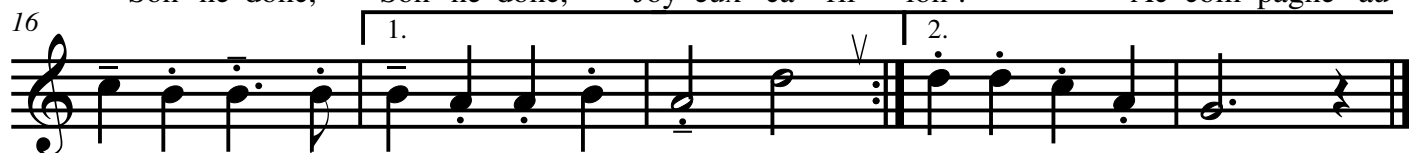
No - tre beau che - val blanc S'é - lan - ce sur la nei - ge Glis -
 Tout au - tour du har - nais S'a - gi - tent les clo - chet - tes Nous



sant comme u - ne flè - che par les bois et par les champs. —
 par - tons à la fê - te C'est No - ël, chan - tons gaie - ment.



Son - ne donc, Son - ne donc, Joy - eux ca - ril - lon ! Ac - com - pagne au



Ré - veil - lon nos rir's et nos chan - sons. Oh !

2ème couplet :

Autour du sapin vert
 Dont les feux se répandent
 Faisons une guirlande
 Et donnons un grand concert.
 Montez, Noël joyeux
 Avec les chants des anges
 Emportez nos louanges
 Car le ciel nous est ouvert.

Dashing trough the snow
 With horse and open sleigh :
 O'er the fields we go.
 Laughing all the way
 Bells on bobtail ring.
 Making spirits bright ;
 What fun it is to ride and sing
 A sleighing song tonight !

Refrain

Jingle bells, jingle bells,
 Jingle all the way.
 O ! what fun it is to ride
 With horse and open sleigh.

N° 50 - AUTOUR DE LA FLAMME (Israël)



Travail sur la GAMME DE RÉ MAJEUR

Musical score for the R Major scale exercise, measures 72-81. The score is written in treble clef, 4/4 time, with a key signature of two sharps (F# and C#). The exercise consists of a single melodic line. Measures 72-73 show the ascending scale with slurs over pairs of notes and accents (v) above notes 7, 11, and 15. Measures 74-75 show the descending scale with slurs over pairs of notes and accents (v) above notes 14, 10, and 6. Measures 76-81 continue the exercise with various rhythmic patterns, including eighth and sixteenth notes, and slurs over groups of notes. Accents (v) are placed above notes 11, 15, 14, 10, 6, 11, 15, 14, 10, and 6.

ARGEERS (J. PLAYFORD)

Musical score for the piece 'Argeers' by J. Playford, measures 76-81. The score is written in treble clef, 4/4 time, with a key signature of two sharps (F# and C#). The piece consists of a single melodic line. Measures 76-81 show the beginning of the piece, which starts with a repeat sign. The melody is characterized by eighth and sixteenth notes, with slurs over groups of notes and accents (v) above notes 11, 15, 14, 10, and 6.