

Airs traditionnels - flûte à bec soprano

Bourrées

Les cinq noisettes (Limousin)

Musical notation for the first piece, 'Les cinq noisettes (Limousin)'. It consists of two staves of music in G major and 3/8 time. The first staff contains measures 1 through 8. The second staff starts at measure 9 and includes first and second endings. The first ending leads back to the beginning of the piece, and the second ending concludes with a final cadence.

Giatte (Auvergne)

Musical notation for the second piece, 'Giatte (Auvergne)'. It consists of two staves of music in G major and 3/8 time. The first staff contains measures 15 through 23, ending with a first ending. The second staff starts at measure 24 and includes a second ending. The first ending leads to the second ending, which concludes the piece.

Montagnarde (Auvergne)

Musical notation for the third piece, 'Montagnarde (Auvergne)'. It consists of two staves of music in G major and 3/8 time. The first staff contains measures 33 through 40. The second staff starts at measure 41 and includes first and second endings. The first ending leads back to the beginning of the piece, and the second ending concludes with a final cadence.

Airs traditionnels - flûte à bec soprano

Le papillon (Auvergne)

50



59



Para lo loup (Auvergne)

66



75



Montagnarde de Saint Nectaire

82



91



99



Airs traditionnels - flûte à bec soprano

Bourrée des dindes (Berry)

101



109



Bourrée de la Brande d'Ardentes

117



125



Bourrée dite "à Aurore Sand" (Berry)

133



140



147



Airs traditionnels - flûte à bec soprano

Bourrée à six de Briantes

152



161

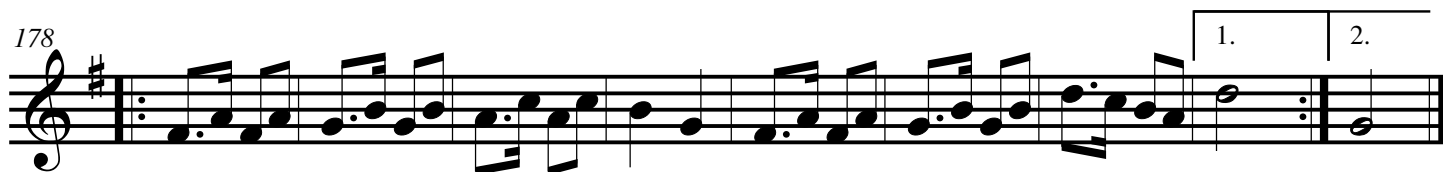


Ton ruban bleu (Berry)

170



178

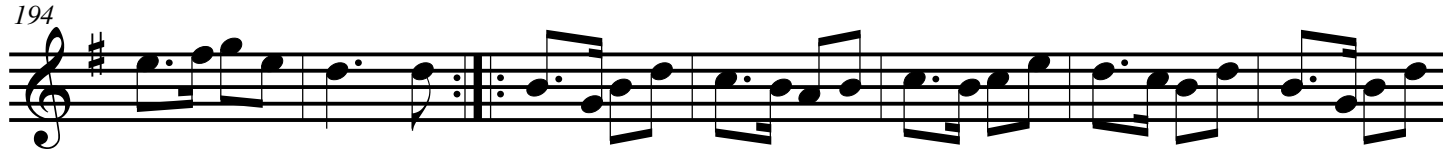


Youp Nanette (Berry)

187



194



201

