

MENUET (JOHANN SEBASTIAN BACH - 1685-1750)

Musical score for Minuet by Johann Sebastian Bach, flute part. The piece is in G major and 3/4 time. It consists of 32 measures. The score is written on a single staff in treble clef. The key signature has one sharp (F#). The time signature is 3/4. The piece begins with a repeat sign. The melody is characterized by eighth and sixteenth notes, with several slurs and accents (marked with a 'V'). The piece concludes with a repeat sign and a final cadence.

MENUET DE TROMPETTE (MICHEL BLAVET - 1700-1768)

Musical score for Minuet de Trompette by Michel Blavet, flute part. The piece is in G major and 3/4 time. It consists of 24 measures. The score is written on a single staff in treble clef. The key signature has one sharp (F#). The time signature is 3/4. The piece begins with a repeat sign. The melody is characterized by eighth and sixteenth notes, with several slurs and accents (marked with a 'V'). The piece concludes with a repeat sign and a final cadence.

MENUET (ROBERT DE VISÉE - ? ~ 1655 - ? >1732, maître de guitare de Louis XIV)

Musical score for Menuet by Robert de Visée. The score is written in G major (one sharp) and 3/4 time. It consists of three staves of music. The first staff starts with a treble clef and a key signature of one sharp (F#). The second staff begins with a measure number '7' and contains a repeat sign. The third staff begins with a measure number '13' and ends with a double bar line and repeat dots.

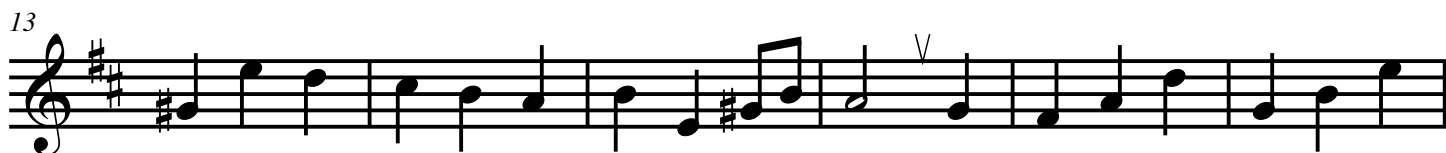
BRANLE DE VILLAGE (JEAN HOTTETERRE - 1610-1691)

Musical score for Branle de Village by Jean Hotteterre. The score is written in G major (one sharp) and 3/4 time. It consists of three staves of music. The first staff starts with a treble clef and a key signature of one sharp (F#). The second staff begins with a measure number '5' and contains two first and second endings. The third staff begins with a measure number '9' and contains two first and second endings. The fourth staff begins with a measure number '13' and contains two first and second endings.

Exercices de travail du sol dièse grave

Musical score for Exercises de travail du sol dièse grave. The score is written in G major (one sharp) and 3/4 time. It consists of three staves of music. The first staff starts with a treble clef and a key signature of one sharp (F#). The second staff begins with a measure number '4' and contains two first and second endings. The third staff begins with a measure number '6' and contains two first and second endings.

AYRE (Benjamin HELY ~1654 - ~1719)



MENUET (MARIN MARAIS 1656-1728)

