

PASSEPIED (Charles Dieupart 1676-1751)

Musical score for 'PASSEPIED' by Charles Dieupart, 3/4 time signature. The score consists of six staves of music. The first staff starts with a treble clef and a 3/4 time signature. The second staff has a measure number '6' and includes first and second endings. The third staff has a measure number '11' and a fermata over a measure. The fourth staff has a measure number '15' and a fermata over a measure. The fifth staff has a measure number '19'. The sixth staff has a measure number '23' and includes first and second endings.

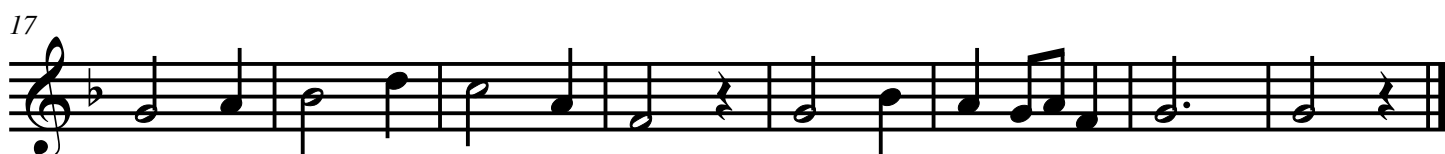
Exercices pour le travail du si bémol (grave)

Musical score for 'Exercices pour le travail du si bémol (grave)'. The score consists of four staves of music in 4/4 time signature. The first staff starts with a treble clef and a key signature of one flat. The second staff has a measure number '9'. The third staff has a measure number '17'. The fourth staff has a measure number '25' and includes the text ':Gammes fa majeur et ré mineur (mélodique)'.

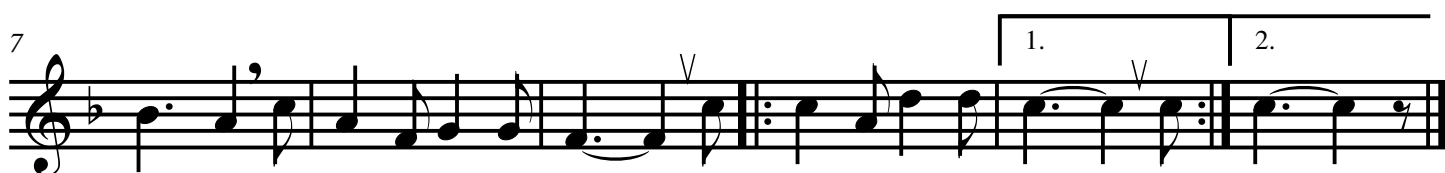
UNE JEUNE FILLETTE (Eustache du Caurroy 1549-1609)



VOLEZ VOUS QUE JE VOUS CHANT ? (Chant de trouvère)



MALB'ROUGH (chanson traditionnelle)



LIN SKOERD (Danse suédoise)



TROIS JEUNES TAMBOURS

Musical score for 'TROIS JEUNES TAMBOURS' in 2/4 time, key of B-flat major. The score consists of two staves. The first staff contains measures 1 through 7, ending with a fermata. The second staff starts at measure 8 and contains measures 8 through 14, including a triplet of eighth notes in measure 10 and a fermata at the end.

DANSE (Georg Philipp Telemann 1681-1767)

Musical score for 'DANSE' by Georg Philipp Telemann in 2/4 time, key of B-flat major. The score consists of three staves. The first staff contains measures 1 through 6, ending with a repeat sign. The second staff starts at measure 7 and contains measures 7 through 11, including a fermata. The third staff starts at measure 12 and contains measures 12 through 15, including first and second endings and a fermata.

MENUET (Marin Marais 1656-1728)

Musical score for 'MENUET' by Marin Marais in 3/4 time, key of B-flat major. The score consists of two staves. The first staff contains measures 1 through 8, ending with a repeat sign. The second staff starts at measure 9 and contains measures 9 through 16, including a fermata and a plus sign (+) above a note in measure 14.

CONFESSE (John Playford 1623-1686)

Musical score for 'CONFESSE' by John Playford in 6/8 time, key of B-flat major. The score consists of two staves. The first staff contains measures 1 through 6, ending with a repeat sign. The second staff starts at measure 7 and contains measures 7 through 13, including a fermata and a plus sign (+) above a note in measure 11.